

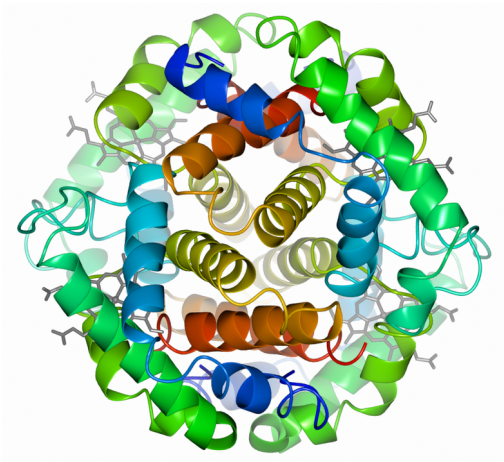
# CCP-EM Pub Quiz 2017

Have a go at the CCP-EM Symposium Pub Quiz! Answers will be announced after the symposium dinner. The winner and runner-up will receive a small prize.

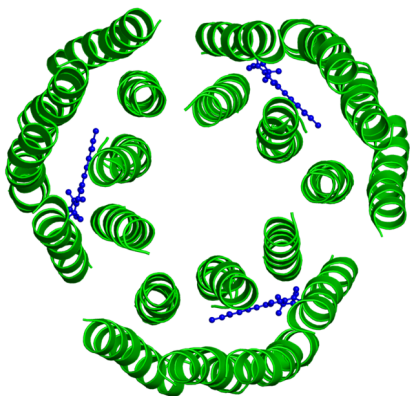
- Who has deposited the most entries in the EMDB?
  - To the nearest multiple of ten, how many entries do they have?
- Helen has been very busy at Birkbeck and with eBIC and CCP-EM and she has lost her wedge! How much wedge has she lost?



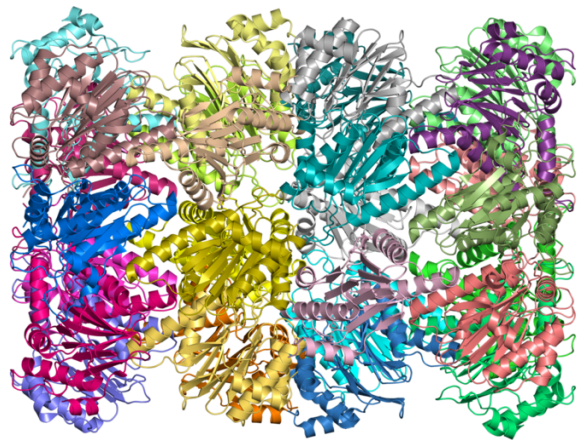
- Guess the protein:
  - 
  -



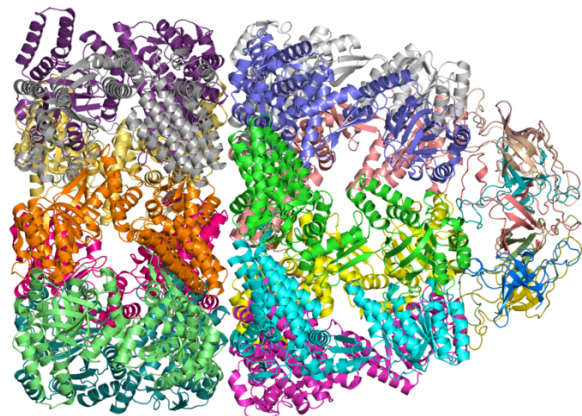
c.



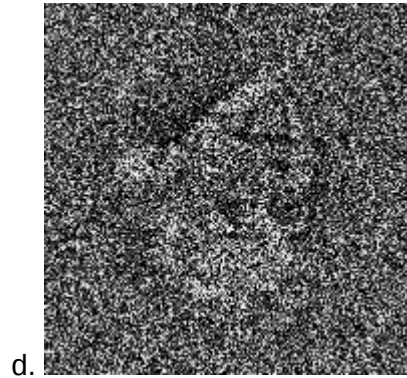
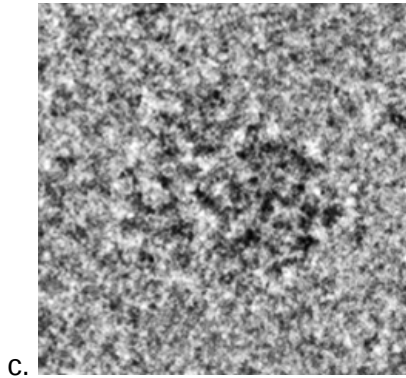
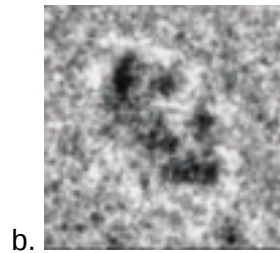
b.



d.



4. Guess the particle:



5. Which Fourier transform belongs to which scientist?



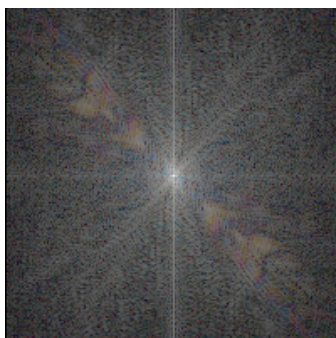
*Peijun Zhang*



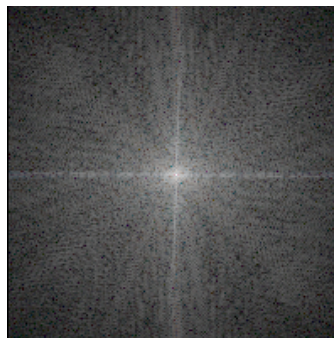
*Martyn Winn*



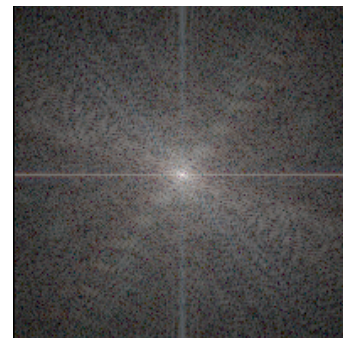
*Peter Rosenthal*



*(i) ???*



*(ii) ???*



*(iii) ???*

6. a. eBIC has produced a lot of data so far! How much data (raw and processed) from eBIC has been saved in Diamond's archive storage? (Answers within 10% will be accepted and the exact answer will be used as a tie-breaker.)

b. How many human genomes would you need to reach the same amount of data, to the nearest power of ten?