

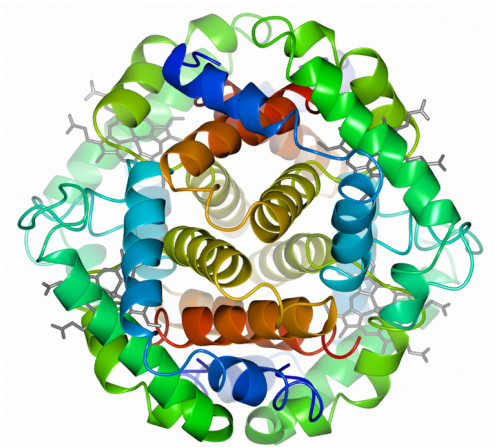
CCP-EM Pub Quiz 2017 (with answers)

Have a go at the CCP-EM Symposium Pub Quiz! Answers will be announced after the symposium dinner. The winner and runner-up will receive a small prize.

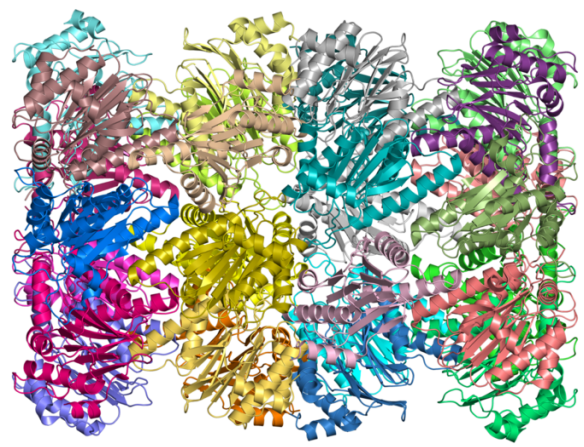
- Who has deposited the most entries in the EMDB? *Wah Chiu*
 - To the nearest multiple of ten, how many entries do they have? *210*
- Helen has been very busy at Birkbeck and with eBIC and CCP-EM and she has lost her wedge! How much wedge has she lost? *60°*



- Guess the protein:
 -
 -

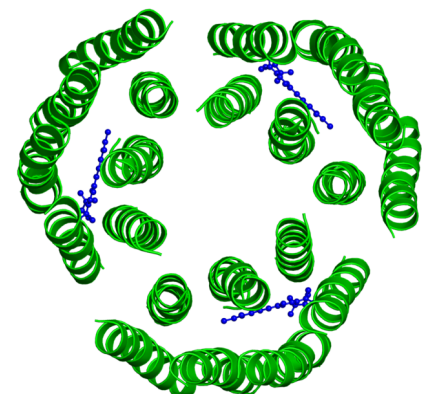


Haemoglobin (smallest sub-4A in EMDB)



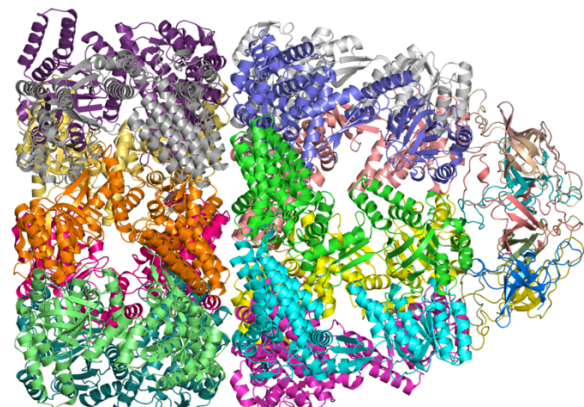
20S proteasome

c.



Bacteriorhodopsin

d.

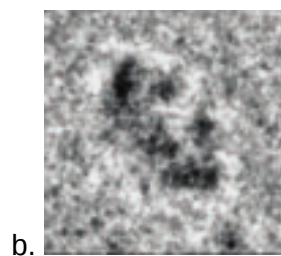


GroEL-GroES

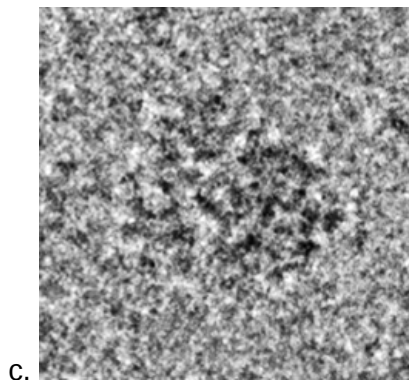
4. Guess the particle:



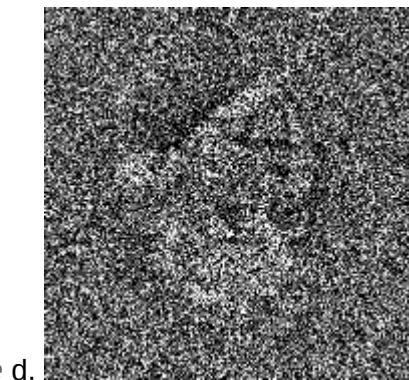
Bacteriophage T4



Beta-galactosidase



80S ribosome



Einstein

5. Which Fourier transform belongs to which scientist?



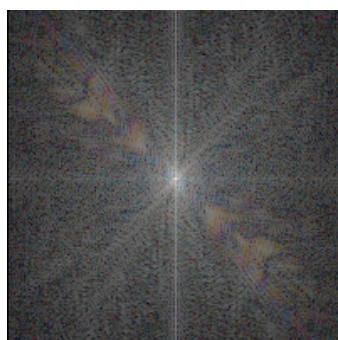
Peijun Zhang



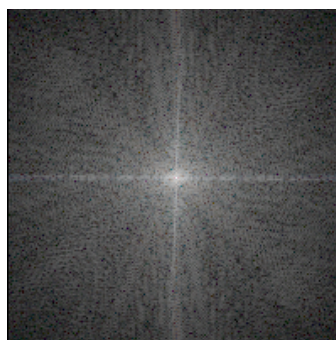
Martyn Winn



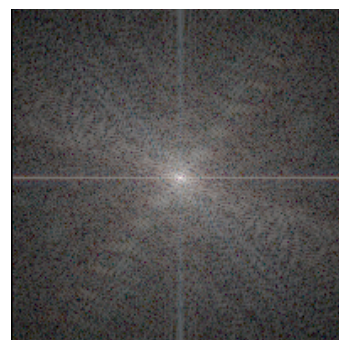
Peter Rosenthal



(i) ??? Peter



(ii) ??? Peijun



(iii) ??? Martyn

6. a. eBIC has produced a lot of data in its first year! How much data from eBIC has been saved so far in Diamond's archive storage? (Answers within 10% will be accepted and the exact answer will be used as a tie-breaker.) *930.98 TB. (837 - 1024 TB range)*

b. How many human genomes would you need to reach the same amount of data, to the nearest power of ten? *Haploid genome is ~700 MB, so roughly 1,000,000*