

CCPEM Pub Quiz 2026 (with answers)

1) Which Fourier Transform belongs to which CCP-EM Spring Symposium organiser?



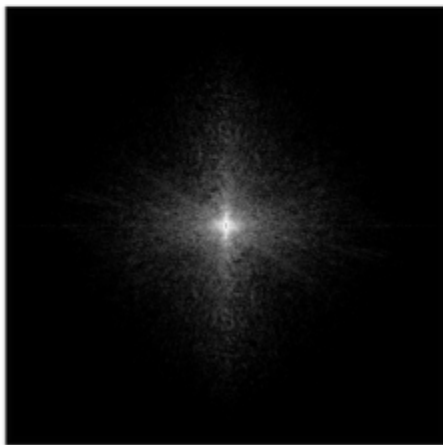
Jamie Blaza



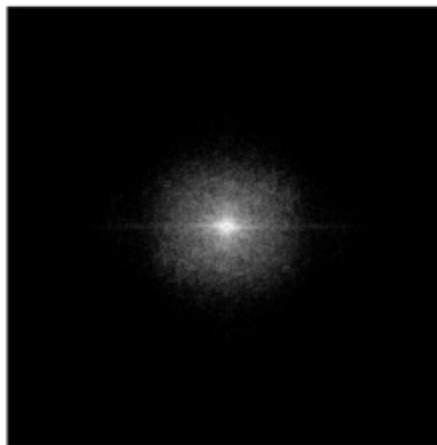
Ana Casañal



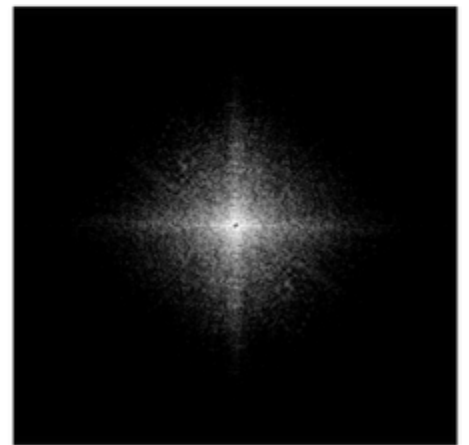
Tom Burnley



a) \_\_\_\_\_

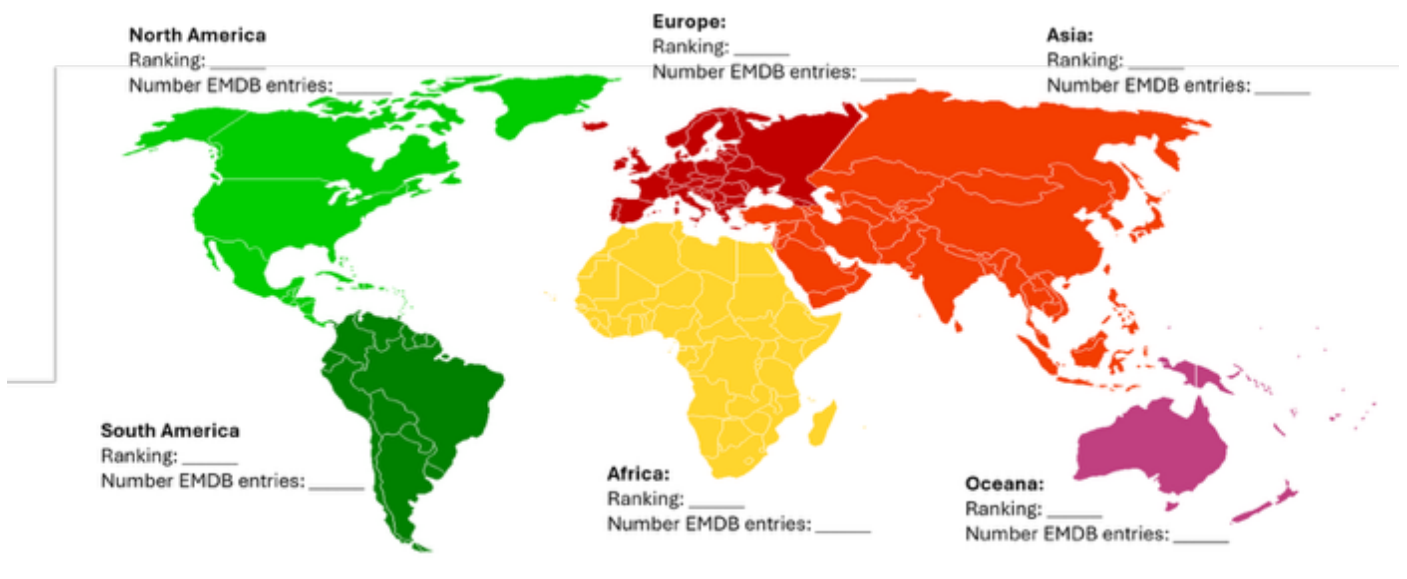


b) \_\_\_\_\_

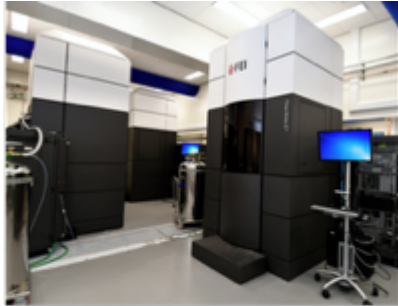


c) \_\_\_\_\_

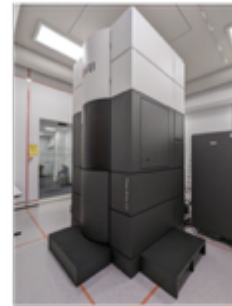
2) Using the manuscripts last author affiliation as a proxy, how many EMDB entries come from each continent? 1 point for correct ranking, 1 extra bonus point for each continent within 10.



3) Rank the microscopes at the following institutes from smallest to largest total distance the stage has moved in X. 1 point for correct ranking, 1 extra bonus point for each correct distance estimate within ±5 metres.



a) eBIC, Titan Krios IV (G3), installed 2017  
 Ranking: \_\_\_\_\_  
 Distance in X: \_\_\_\_\_



b) Leicester, Titan Krios G3, installed 2017  
 Ranking: \_\_\_\_\_  
 Distance in X: \_\_\_\_\_



d) STRUBI, Titan Krios G3i, installed in 2018  
 Ranking: \_\_\_\_\_  
 Distance in X: \_\_\_\_\_

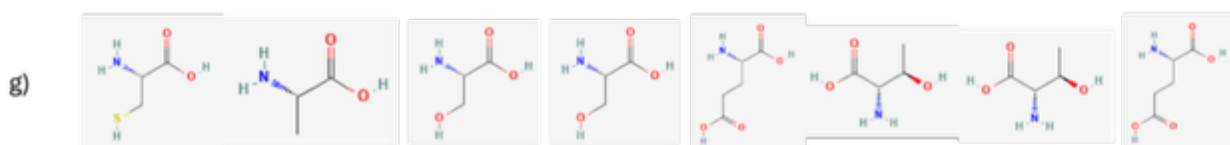
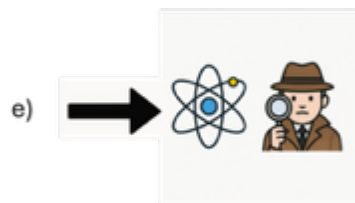
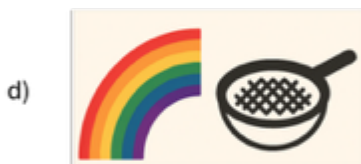


c) Crick, Talos Arctica, installed in 2018  
 Ranking: \_\_\_\_\_  
 Distance in X: \_\_\_\_\_



e) eBIC, Talos Arctica, installed in 2018  
 Ranking: \_\_\_\_\_  
 Distance in X: \_\_\_\_\_

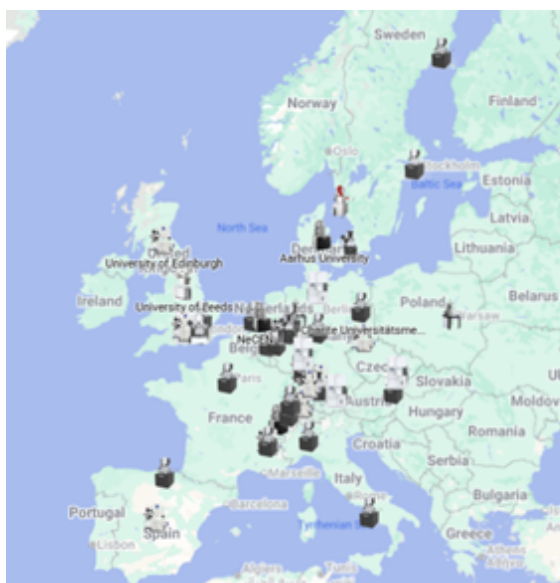
4) Say what you see... and find the cryogenic TEM components.



5) A 100  $\mu\text{m}$  astigmatism has been applied to the CCPEM Spring Symposium sponsors logos, pair the stigmatic image with the correct logo.



6) What is the total number of life science dual beam cryo-FIBs have been installed in Europe?



Number: \_\_\_\_\_

7) Tie breaker question: How much data has been collected at eBIC since its conception in 2015?